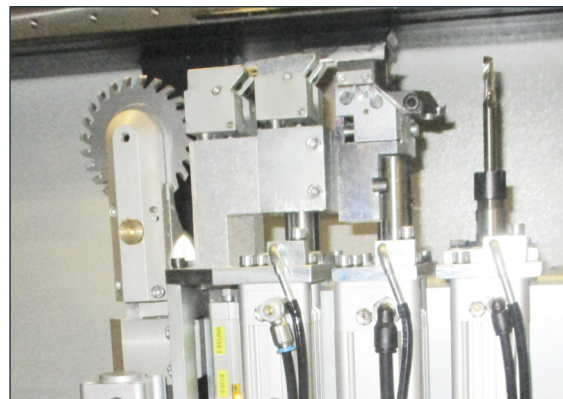


Characteristic features:

- Fully automatic cleaning of visible surfaces, outer corners, seal grooves, inner corners on uPVC window frames and sashes also with radii, curves and bevels
- Variable tooling with up to twelve tool places + Contour disk
- Pneumatic clamping system
- Manual and/or turntable operation
- Interconnection of multiple head welding machines
- Interpolating 2-axes-CNC control with integrated SPS
- Memory for up to 300 NC programs
- Easy program editing for additional profile contours by copy programming and modification
- Automatic profile recognition or data transfer from the welding machine



Efficient

- High processing quality due to spring-mounted knifing units compensating profile tolerances in the inner corner area

Reliable and of low-maintenance

- Low-maintenance precision guiding devices with central lubrication system and recirculating ball spindles

User friendly

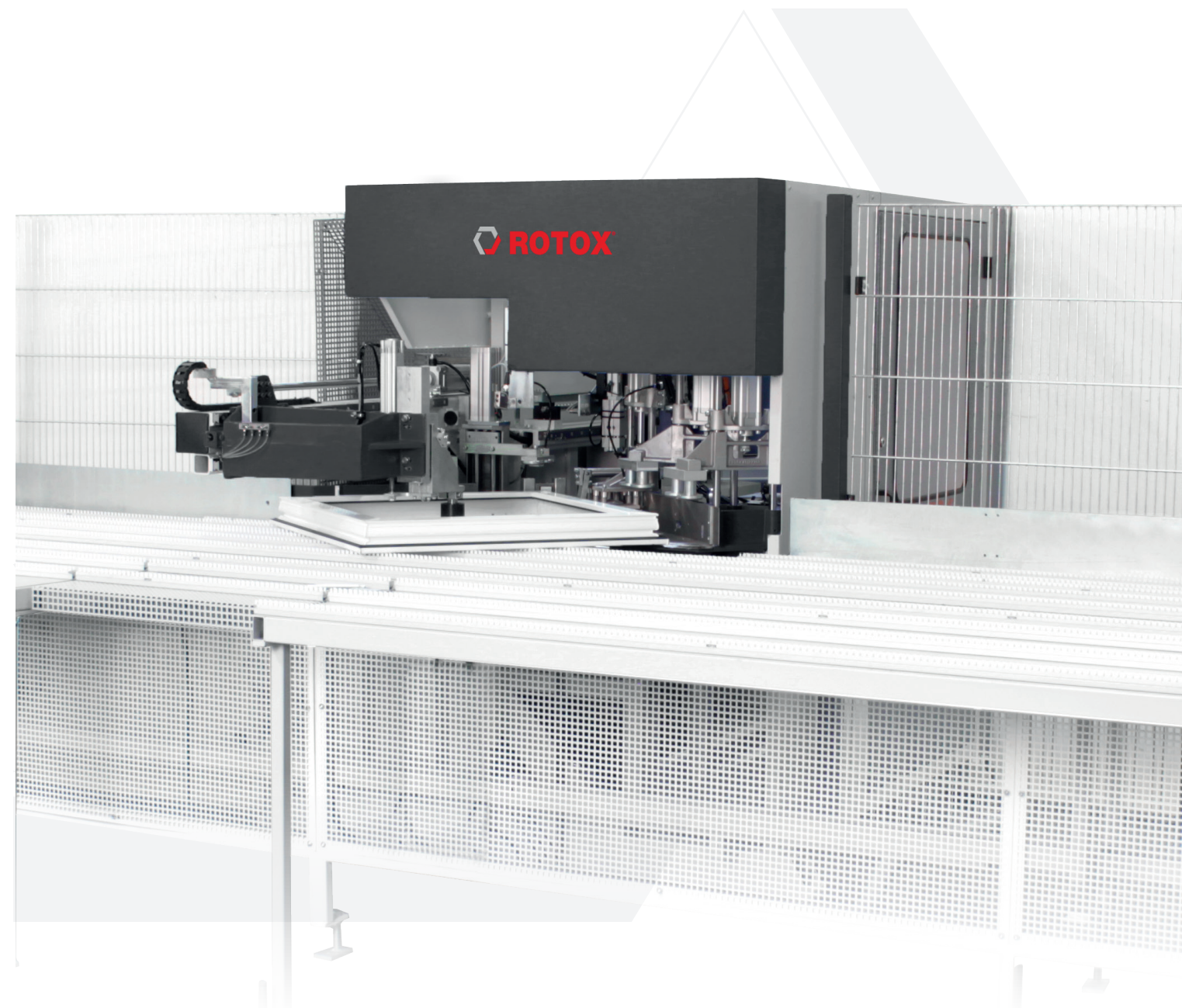
- PC for visualisation
- Adjustment of correction parameters by means of CAD profile drawings

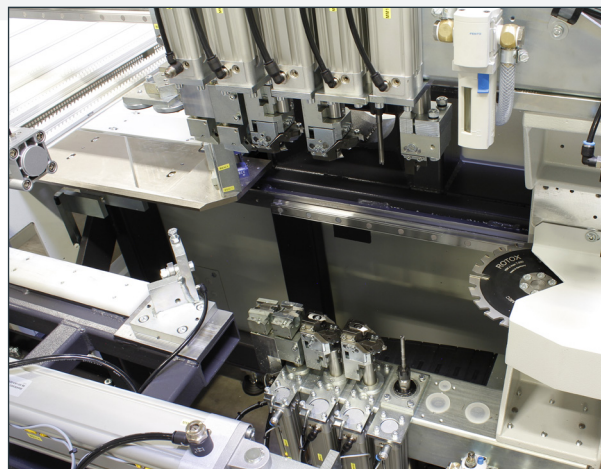
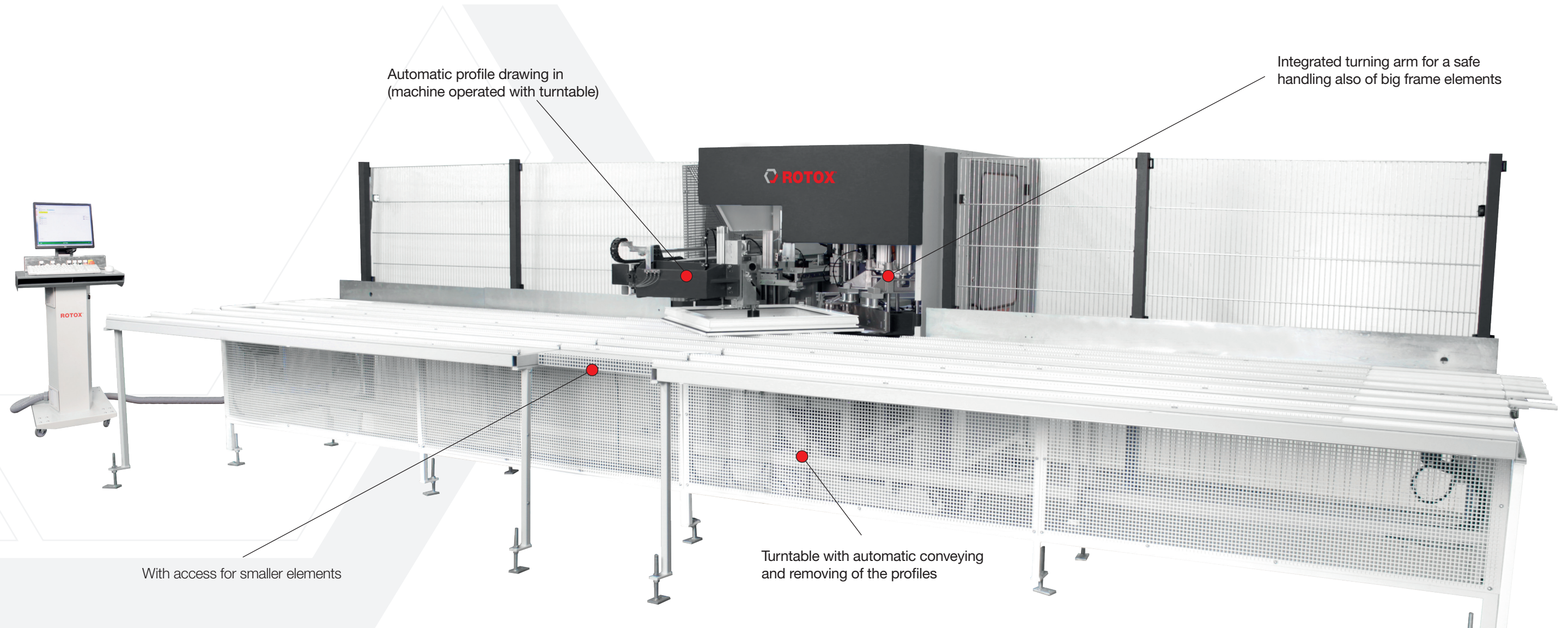
Profitable

- Low cycle times for corners and frames

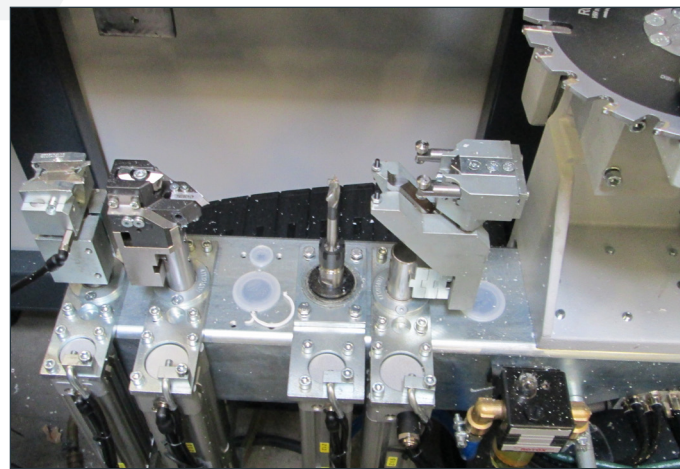
Technical data:

- Power (kW): 3,8
- Voltage (V): 400
- Air pressure (bar): 7
- Workable profile width (mm): 50 - 130
- Workable profile height (mm):
50 - 115 standard
50 - 150 optional
- Machine dimensions L x D x H (mm):
2.400 x 1.800 x 1.900 (without WT)
5.700 x 4.100 x 1.900 (with WT)
6.700 x 4.600 x 1.900 (with WT)
- Weight (kg): 750 - 1.350

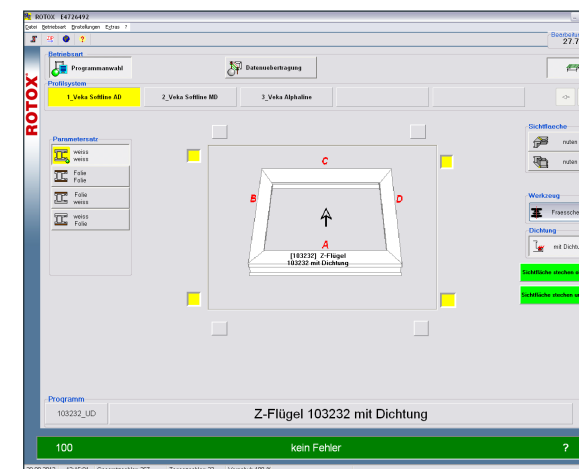




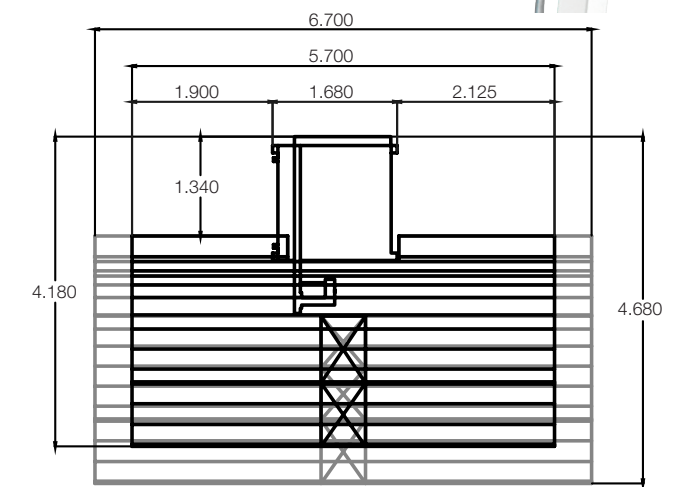
Processing carriage with 6 tool places above and below



Clear and easily accessible arrangement of the units even when extensively loaded



Operator friendly visualisation. On demand: Modern remote maintenance (ROTOX-Web-Control)



Layout example of an EPA 472 for turning stations 5.700 mm and 6.700 mm