

Corner Cleaning Machine

With up to 7 axes for the complete machining of the corners.

EPA 579-2/4/6

✓ Characteristic features:

- Solid welded construction of the machine base
- Durable precision through attachment of flat guidings on milled surfaces
- 2 CNC axes (optionally up to 7) providing a high repeat accuracy and low cycle times
- High quantity of 6/7 (optionally up to 12) tool places each above and below
- Reliable knifing units ensure very good machining results even at laminated profiles
- Flexible and gentle profile insertion through controlled axes
- Modern Windows PC control

Optional extras:

- Automatic recognition of the profiles, data transfer via bar-code scanner and/or data transfer from a welding machine or to a following station
- Swivelling device with controlled motor for an consistent swivelling of even unfavorable element sizes
- NC controlled support shifting for the machining of frame combinations
- Electrically driven swivelling corner and rebate stay hinge unit for the drilling in PVC and/or steel
- Tip milling unit for the milling of profile tips at frame and/or mullion combinations
- Tip sawing unit for the sawing of profile tips at frame combinations of different widths or for the sawing of notches
- Milling and knifing units for the complete machining of profiles with acrylic surface
- Sealing cutting unit for the glass or stop seals
- And many more options



Optional: Motor-driven swivelling device, NC controlled support shifting

✓ Technical data:

- Voltage (V): 400
- Operating pressure (bar): 7
- Machinable profile width (mm): 40/50 -140
- Machinable profile height (mm): 40/50 -125 (Monobloc version up to 180 mm)
- Standard support height (mm): 950
- Machine dimensions W x D x H (mm): Depending on the model
- Weight (kg): approx. 2.100
- Machinable material: welded PVC hollow profiles for window and door frames



Automatic profile insertion via controlled servo axes

Turning station with automatic in- and outfeed of the profiles, optionally from left to right or from right to left

Integrated motor-driven turning arm for the secure turning of even larger frame elements

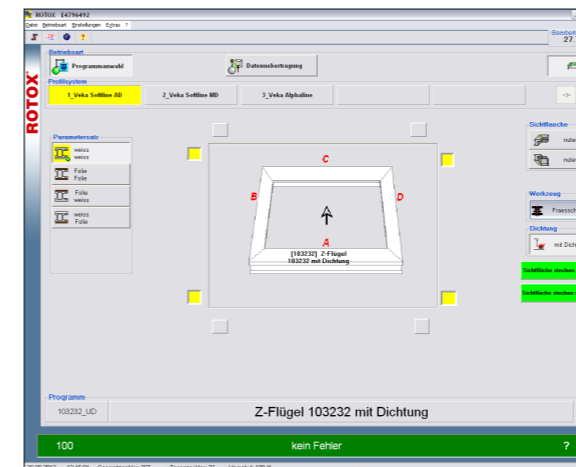
Moveable operator terminal with 15 m cable (option) for supervising and controlling in line operation



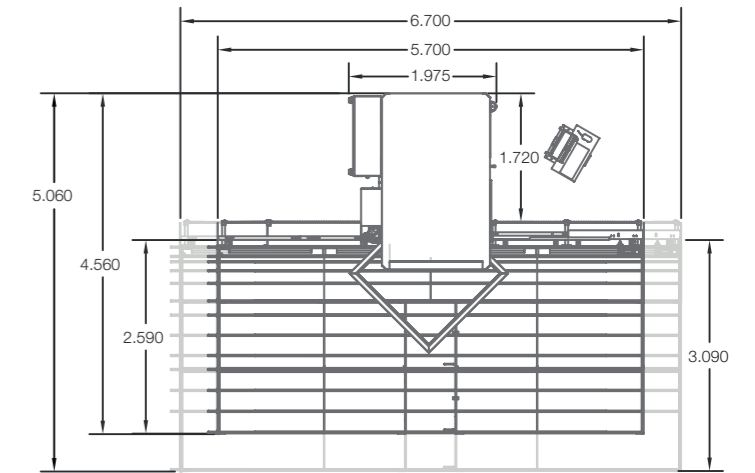
Swivelling corner and rebate stay hinge unit with electric motor for a maximum drilling performance



Clear and easily accessible arrangement of the units even when extensively loaded



Operator friendly visualisation. On demand: Modern remote maintenance (ROTOX-Web-Control)



Layout example of an EPA 579-6 for turning stations 5.700 mm and 6.700 mm